



Knowledge Organiser: Animals, including humans
All about me

Careers connected to the human body:
doctor, nurse, massage therapist,
personal trainer, theatre technician



Lesson Sequence



1. Discover the basic parts of the human body



2. Learn about your eyes and sight



3. Learn about your ears and hearing



4. Explore the tongue and taste

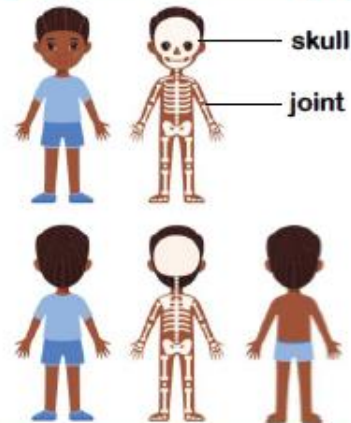


5. Explore your sense of touch



6. Discover how your nose smells

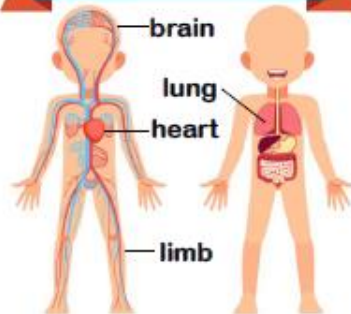
Human Skeleton



BODY PARTS



The Human Organs

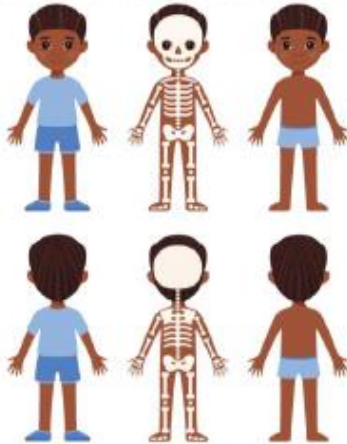


5 SENSES





Circle the skull and where the skull can be found.



Draw a line from the word to the correct body part.



foot leg arm knee

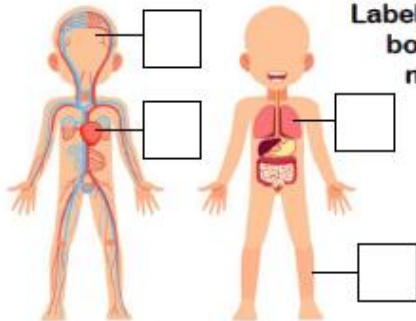
Draw a line from the word to the correct sense and body part.

tongue ear eye hand nose



taste smell hearing touch sight

Label the parts of the human body. Place the correct number in each box.



lung = 1

heart = 2

limb = 3

brain = 4



Rocket Words

head	the top part of a human or an animal's body
body	the whole of a human or animal, including the head, brain, heart, legs and arms
brain	the control centre of the body
pupil	the black spot in the middle of the eye that lets in light, colour and shapes
ear	the organs, or body parts, in humans and many other animals that allow them to hear
sound	vibrations, or sound waves, that we can hear
tongue	moving organ in the mouth that is used for talking, tasting, eating and licking
taste	the sense by which sweet, sour, bitter, or salty flavours are detected through taste buds in the tongue



Aerial View

What something looks like from above

Map

A picture showing where things are located in an area

Location

The place where something is

Compass

A tool used to find out directions

Key

A tool used to show what symbols on a map represent

Symbol

A picture on a map that represents something

Navigate

To find the way

Compass Points



Park Map



A good map has:

A title

A key

Symbols

Compass points

A person who draws maps is called a cartographer

