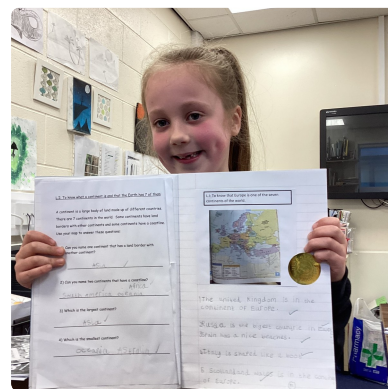




## Weekly update - 19th April 2024

Thank you for your support again in what has been another busy week. Although cold, we have at least had a little brighter weather so have been able to enjoy the full school grounds at break and lunchtimes!

We had a visit this week from a leader who is in charge of a number of primary schools in Bradford. We are pleased that, in his feedback, he stated, "I was so impressed with school and the team have clearly developed a fantastic school with some very happy looking children." He commented that, in the midst of a difficult time for the education sector, Low Ash seemed to be an 'oasis of calm'. The children, as always, are a credit to the school.



---

### Attendance - Every day and every minute counts

Now that the summer term is fully underway we need to remind families of the importance of regular attendance and punctuality. We also want to thank the vast majority of families where children are at school on time each day. Last week the school attendance at Low Ash was only 92.1% - far lower than the expectation of at least 96%. Hopefully as the weather gets warmer, the illnesses will reduce and we can increase this figure.

A reminder that we cannot authorise absences for "avoidable" reasons and will often require documents to support absences. This is not a case of us not trusting you but is a procedure we

need to follow. If your child has a "low level" illness (such as a mild tummy ache, headache or sore throat) then they are usually fine to come to school. If you are unsure whether to send your child to school or not, please ring the office for advice.

**Did you know being just 5 minutes late each day over the school year leads to 3 whole school days being missed.**

Below there are some graphics which highlight the importance of attendance.



## STEM Week- We need you!

During the last week of this half term, we are holding a STEM (science, technology, engineering and maths) week in school. We are hoping to invite a range of speakers into school, either remotely or in person, who have careers in these areas to help raise pupils' aspirations and open their minds up further to the world of work. If you, anyone in your family or any of your friends feel they could help during the week, please email the school office on [office@lowash.bradford.sch.uk](mailto:office@lowash.bradford.sch.uk) with the subject marked as STEM week.



## OPAL (Outdoor Play and Learning)

We continue to develop our outdoor play provision and schools from across Bradford and further afield are continuing to visit us to see what we have to offer at breaktimes and lunchtimes. Last week we introduced boats and, this week, we will introduced our new outdoor reading shelter. This was made for us by one of very skilled members of staff (who wishes to remain nameless!). We always welcome donations of items for our playtimes. Suitcases, pushchairs, old office 'spinnny' chairs, crates, dressing up clothes and small world items would be really appreciated.

We will have our formal Opal assessment in the final week of the half term.



---

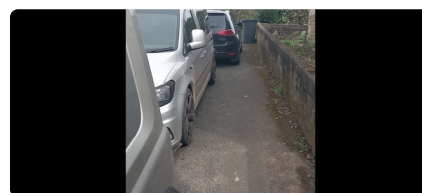
## School Linking

This week we welcomed Feversham Primary School to Low Ash as part of the Year 3 School Linking project. Pupils had the opportunity to take part in a range of activities together and they thoroughly enjoyed themselves.

---

## Parking

Please can we remind you to park safely and responsibly around school. We have started to receive complaints once again from the local residents - in particular those who live on Wrose View. We also want to thank the vast majority of families who do park safely at all times or come to school via other means. We have requested the presence of parking wardens around school once more to try and help with the situation. Should you see anyone parked illegally or dangerously, please take a photograph of the registration and email the photo to [parkingissues@bradford.gov.uk](mailto:parkingissues@bradford.gov.uk)



**Some of the irresponsible parking reported to us this week.**

---

**Dates for the diary**

**Monday 22nd - Wednesday 24th April**

Year 5 residential trip to Nell Bank

**May 7th**

School class photographs - please make sure all children are in school uniform (not PE kit) for the photos

**Monday 13th May - Thursday 16th May**

Key Stage 2 SATs

**Week commencing 20th May**

STEM week

**Friday 24th May**

Break up for the holidays (2 weeks school holidays)

---

**Energy drinks**

Please click here for this week's information leaflet which is all about energy drinks and their negative effects.



**Low Ash Primary School**